



6. THE ENERDU PROPOSED DEVELOPMENT AS WE UNDERSTAND IT

Brian Young
MRW



Information Source

The information on weir location, proposed weir size, excavation for the weir, Thoburn Mill weir size, river bottom excavation, powerhouse location, powerhouse size, and adjacent building has been obtained from documents released by Enerdu and OEL-HydroSys.

All measurements and plans presented in this presentation are those supplied by Enerdu.

All of our comments are based on information in their plans.



Enerdu Documents



2013-April-11

Mississippi RiverWatchers Update on the Enerdu Project

3



Weir Location

- Directly adjacent to the existing weir but on the downstream side.
- Width of the base is a minimum of 3.5 metres (11.5 feet)
- Height similar to existing weir and flashboards

2013-April-11

Mississippi RiverWatchers Update on the Enerdu Project

4



Weir Location



2013-April-11

Mississippi RiverWatchers Update on the Enerdu Project

5



Excavation at Weir

- Both downstream and upstream of the existing weir
- Downstream excavation of between 4.5 and 5 metres (14.5 to 16.25 feet)
- Hoe ramming or blasting

2013-April-11

Mississippi RiverWatchers Update on the Enerdu Project

6



Weir Excavation



2013-April-11

Mississippi RiverWatchers Update on the Enerdu Project

7



River Bottom Excavation Upstream

- The limits are still being defined by Enerdu
- The depth of the river will be significantly increased
- Will direct the flow to the new powerhouse
- Hoe ramming or blasting? We do not know

2013-April-11

Mississippi RiverWatchers Update on the Enerdu Project

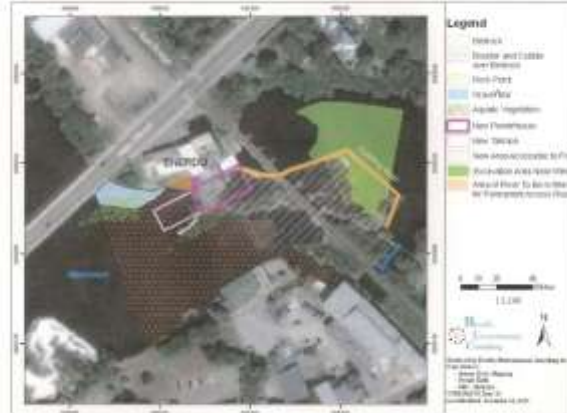
8



River Bottom Excavation Upstream

Mississippi River - Proposed Enerdu Expansion Waterpower Project - EIA - Version 1.0

Figure 4 Location of Construction Phase Activities



Brevin Environmental Consulting Inc. Page 37
December 13, 2011

2013-April-11

Mississippi RiverWatchers Update on the Enerdu Project

9



River Bottom Excavation Downstream

Adjacent to the downstream side of the existing weir:

- 4.5 to 5 metres wide (14.5 to 16.25 feet) plus the area in green
- Adjacent to the new powerhouse
- Downstream of the new powerhouse

2013-April-11

Mississippi RiverWatchers Update on the Enerdu Project

10



Proposed Powerhouse

Adjacent to the existing powerhouse extending into the river:

- Length – 32 metres (104 feet)
- Width – 15 metres (48.75 feet)
- Height – 7 to 8 metres (24 to 25 feet)

2013-April-11

Mississippi RiverWatchers Update on the Enerdu Project

11



Proposed Powerhouse



2013-April-11

Mississippi RiverWatchers Update on the Enerdu Project

12



New Powerhouse

- Proposed Exterior
- Closest Residences
 - Enerdu Apartments
 - Main Street
 - Union Street
 - Thoburn Mill

2013-April-11

Mississippi RiverWatchers Update on the Enerdu Project

13



Proposed Powerhouse

- Closest Business – Barley Mow Pub
39.6 metres (130 feet)
- Visual Impact
- Noise Impact – MOE Application

2013-April-11

Mississippi RiverWatchers Update on the Enerdu Project

14



Scale Model

- Please come and see the model
- Look at the weir size
- Look at the excavation areas
- Look at the proposed powerhouse location
- Look at the proposed powerhouse size

2013-April-11

Mississippi RiverWatchers Update on the Enerdu Project

15



Take Time to See the Model



2013-April-11

Mississippi RiverWatchers Update on the Enerdu Project

16